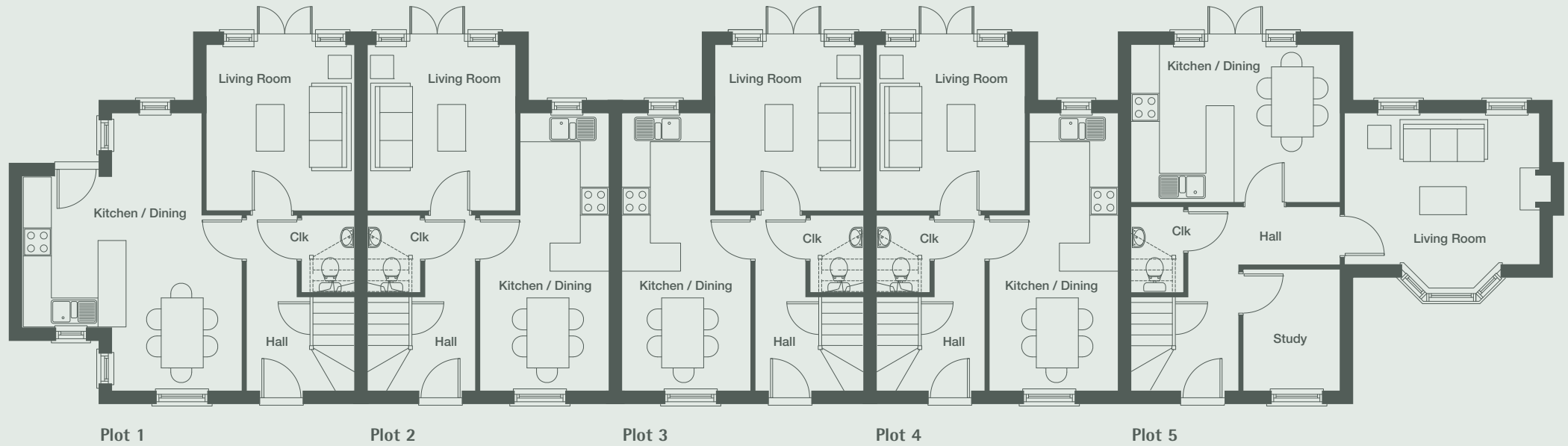




## Floor Plans | Ground Floor



### Plot 1

Kitchen / diner	5.95m x 4.68m	19'5" x 15'3"
Living room	3.55m x 3.14m	11'6" x 10'3"

### Plot 2

Kitchen / diner	5.95m x 2.74m	19'5" x 8'9"
Living room	3.55m x 3.14m	11'6" x 10'3"

### Plot 3

Kitchen / diner	5.95m x 2.74m	19'5" x 8'9"
Living room	3.55m x 3.14m	11'6" x 10'3"

### Plot 4

Kitchen / diner	5.95m x 2.74m	19'5" x 8'9"
Living room	3.55m x 3.14m	11'6" x 10'3"

### Plot 5

Kitchen / diner	4.44m x 3.36m	14'6" x 11'0"
Study	2.60m x 2.04m	8'5" x 6'7"
Living room	4.13m x 3.75m	13'5" x 12'3"
	into bay	into bay