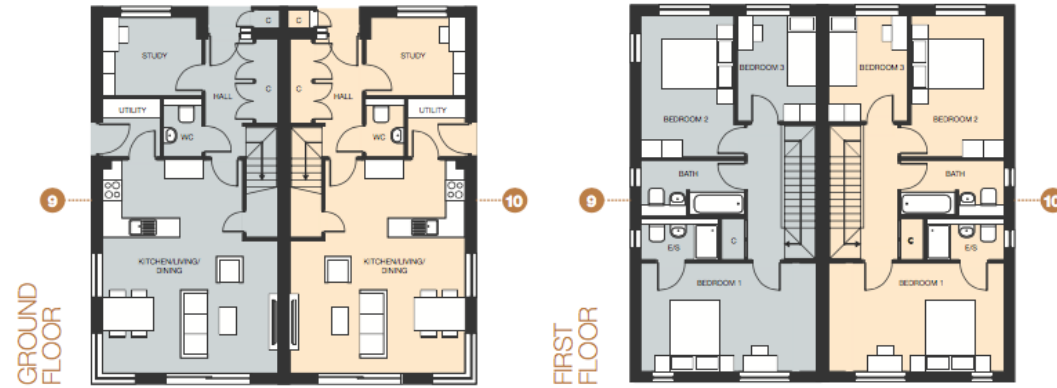


HOUSES



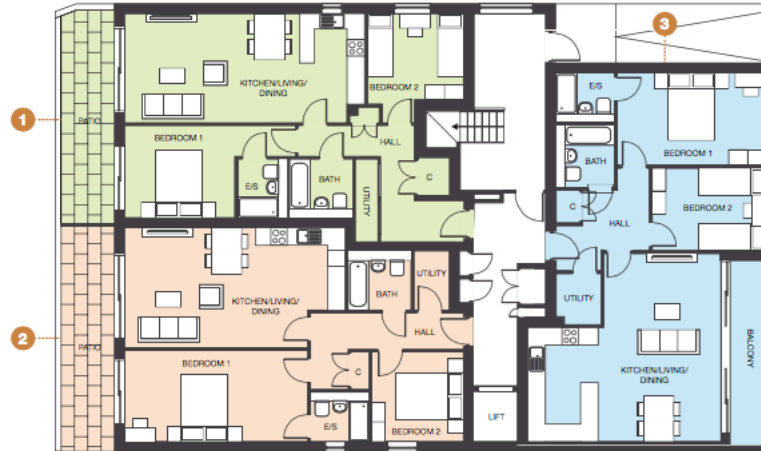
UNIT 9

| | |
|---|-----------------|
| Kitchen/Living/Dining 6.64m x 5.43m | 21.7ft x 17.8ft |
| Utility 1.82m x 1.84m | 5.9ft x 6.0ft |
| Study 2.47m x 3.13m | 8.1ft x 10.2ft |
| WC 1.82m x 1.22m | 5.97ft x 4.0ft |
| Bedroom 1 3.40m x 5.43m | 11.1ft x 17.8ft |
| Ensuite 1.34m x 2.44m | 4.3ft x 8.0ft |
| Bedroom 2 4.40m x 2.92m | 14.4ft x 9.5ft |
| Bedroom 3 3.32m x 2.51m | 10.8ft x 8.2ft |
| Bathroom 1.72m x 3.24m | 5.6ft x 10.6ft |

UNIT 10

| | |
|---|-----------------|
| Kitchen/Living/Dining 6.64m x 5.43m | 21.7ft x 17.8ft |
| Utility 1.82m x 1.84m | 5.9ft x 6.0ft |
| Study 2.47m x 3.13m | 8.1ft x 10.2ft |
| WC 1.82m x 1.22m | 5.97ft x 4.0ft |
| Bedroom 1 3.40m x 5.43m | 11.1ft x 17.8ft |
| Ensuite 1.34m x 2.44m | 4.3ft x 8.0ft |
| Bedroom 2 4.40m x 2.92m | 14.4ft x 9.5ft |
| Bedroom 3 3.32m x 2.51m | 10.8ft x 8.2ft |
| Bathroom 1.72m x 3.24m | 5.6ft x 10.6ft |

APARTMENTS GROUND FLOOR



UNIT 1

| | | |
|------------------------------|---------------|-----------------|
| Kitchen/Living/Dining | 3.74m x 8.25m | 12.2ft x 27.0ft |
| Utility | 2.78m x 0.88m | 9.1ft x 2.8ft |
| Bedroom 1 | 3.19m x 3.82m | 10.4ft x 12.5ft |
| Ensuite | 2.04m x 1.71m | 6.6ft x 5.6ft |
| Bedroom 2 | 3.14m x 3.32m | 10.3ft x 10.8ft |
| Bathroom | 2.04m x 2.17m | 6.6ft x 7.1ft |

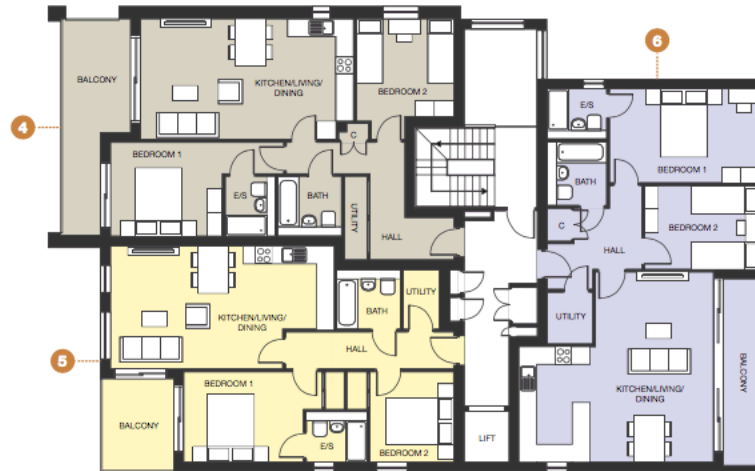
UNIT 2

| | | |
|------------------------------|---------------|-----------------|
| Kitchen/Living/Dining | 4.11m x 7.60m | 13.4ft x 24.9ft |
| Utility | 2.04m x 1.28m | 6.7ft x 4.1ft |
| Bedroom 1 | 3.16m x 6.30m | 10.3ft x 20.6ft |
| Ensuite | 1.72m x 2.02m | 5.6ft x 6.6ft |
| Bedroom 2 | 3.09m x 3.17m | 10.2ft x 10.4ft |
| Bathroom | 2.04m x 2.17m | 6.6ft x 7.1ft |

UNIT 3

| | | |
|------------------------------|---------------|-----------------|
| Kitchen/Living/Dining | 6.47m x 6.62m | 21.2ft x 21.7ft |
| Utility | 1.77m x 1.43m | 5.8ft x 4.6ft |
| Bedroom 1 | 3.20m x 5.15m | 10.4ft x 16.8ft |
| Ensuite | 1.72m x 2.04m | 5.6ft x 6.6ft |
| Bedroom 2 | 3.93m x 2.84m | 12.8ft x 9.3ft |
| Bathroom | 2.17m x 2.04m | 7.1ft x 6.6ft |

APARTMENTS FIRST FLOOR



UNIT 4

| | |
|---|-----------------|
| Kitchen/Living/Dining 4.10m x 7.23m | 13.4ft x 23.7ft |
| Utility 2.78m x 0.88m | 9.1ft x 2.8ft |
| Balcony 7.25m x 2.35m | 23.7ft x 7.7ft |
| Bedroom 1 3.14m x 3.82m | 10.3ft x 12.5ft |
| Ensuite 2.04m x 1.71m | 6.6ft x 5.6ft |
| Bedroom 2 3.48m x 3.32m | 11.4ft x 10.8ft |
| Bathroom 2.04m x 2.17m | 6.6ft x 7.1ft |

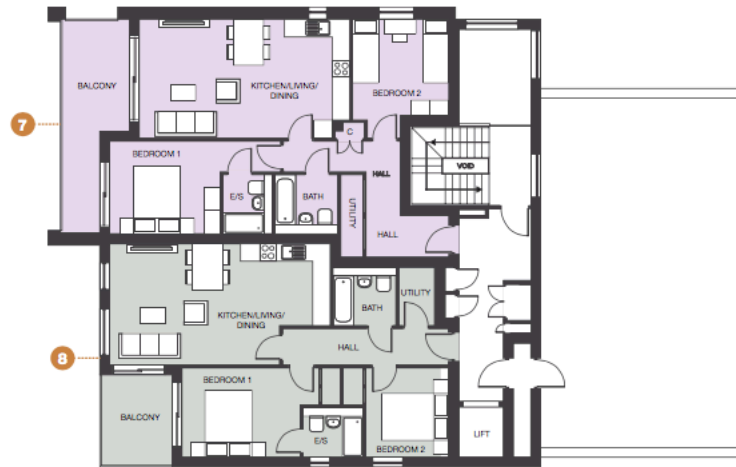
UNIT 5

| | |
|---|-----------------|
| Kitchen/Living/Dining 4.18m x 7.60m | 13.7ft x 24.9ft |
| Utility 2.04m x 1.26m | 6.6ft x 4.1ft |
| Balcony 3.05m x 2.40m | 10.0ft x 7.8ft |
| Bedroom 1 3.09m x 4.77m | 10.1ft x 15.6ft |
| Ensuite 1.72m x 2.02m | 5.6ft x 6.6ft |
| Bedroom 2 3.09m x 2.87m | 10.1ft x 9.4ft |
| Bathroom 2.04m x 2.17m | 6.6ft x 7.1ft |

UNIT 6

| | |
|---|-----------------|
| Kitchen/Living/Dining 6.47m x 6.62m | 21.2ft x 21.7ft |
| Utility 1.72m x 1.43m | 5.6ft x 4.6ft |
| Balcony 6.25m x 1.65m | 20.5ft x 5.4ft |
| Bedroom 1 3.20m x 5.15m | 10.4ft x 16.8ft |
| Ensuite 1.72m x 2.04m | 5.6ft x 6.6ft |
| Bedroom 2 2.84m x 3.93m | 9.3ft x 12.8ft |
| Bathroom 2.17m x 2.04m | 7.1ft x 6.6ft |

APARTMENTS SECOND FLOOR



UNIT 7

| | | |
|------------------------------|---------------|-----------------|
| Kitchen/Living/Dining | 4.10m x 7.23m | 13.4ft x 23.7ft |
| Utility | 2.78m x 0.88m | 9.1ft x 2.8ft |
| Balcony | 7.25m x 2.35m | 23.7ft x 7.7ft |
| Bedroom 1 | 3.82m x 3.11m | 12.5ft x 10.2ft |
| Ensuite | 2.04m x 1.62m | 6.6ft x 5.3ft |
| Bedroom 2 | 3.48m x 3.32m | 11.4ft x 10.8ft |
| Bathroom | 2.04m x 2.17m | 6.6ft x 7.1ft |

UNIT 8

| | | |
|------------------------------|---------------|-----------------|
| Kitchen/Living/Dining | 4.18m x 7.60m | 13.7ft x 24.9ft |
| Utility | 2.04m x 1.26m | 6.6ft x 4.1ft |
| Balcony | 3.05m x 2.40m | 10.0ft x 7.8ft |
| Bedroom 1 | 3.09m x 4.47m | 10.1ft x 14.6ft |
| Ensuite | 1.72m x 2.06m | 5.6ft x 6.7ft |
| Bedroom 2 | 3.09m x 2.87m | 10.1ft x 9.4ft |
| Bathroom | 2.04m x 2.17m | 6.6ft x 7.1ft |